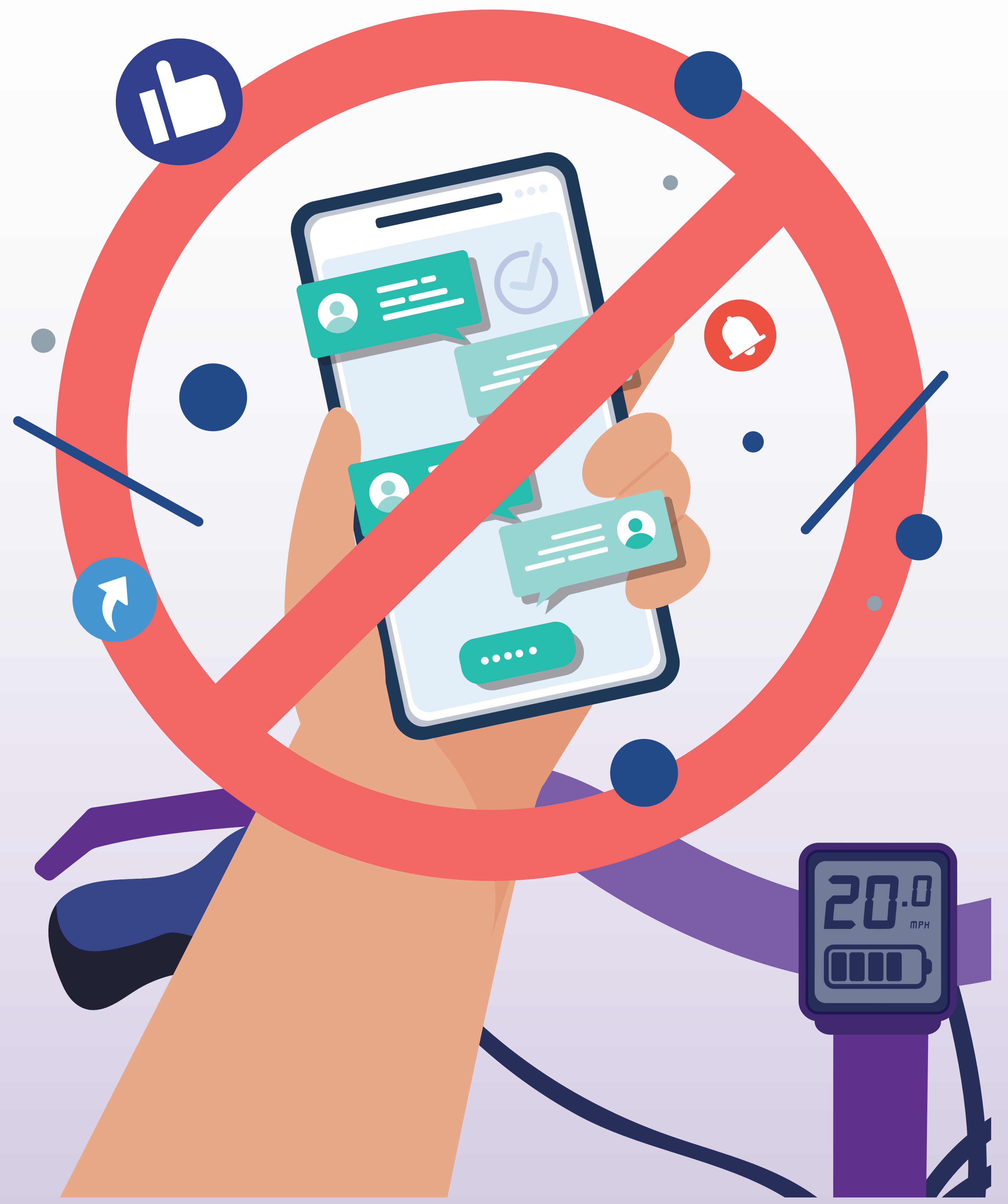


RIDE SMART

Phone use is one of the biggest risks for young riders.

At 20 mph, you cover 29 feet every second.



RIDE SAFE

Wear a properly fitted helmet every single ride.

Only 17% of injured e-bike riders in Central Florida were wearing helmets.

Look for e-bike helmets (NTA 8776) for full-coverage protection.

RIDE LEGAL

E-bikes come in three classes with different speeds and rules about where you can ride.

Local governments may require age minimums and/or government-issued photo ID for e-bike riders.

CLASSES
1 & 2  CLASS
3

MAX
SPEED
20
MPH

MAX
SPEED*
28
MPH

*Maximum speeds indicate the point at which the motor stops providing assistance. Some e-bike models can operate as both **Class 2** and **Class 3**, allowing riders to switch between the two modes. Check specifications and safety before purchasing.